



9 Barn Close
Somerton, TA11 6PH

GeorgeJames PROPERTIES
EST. 2014

9 Barn Close

Somerton, TA11 6PH

Guide Price - £229,950

Tenure – Freehold

Local Authority – Somerset Council

Summary

9 Barn Close is a very well presented terraced house situated within this popular development on the outskirts of the town. The property has recently undergone a full programme of refurbishment and decoration including new windows, kitchen and bathroom. Accommodation includes entrance hall, WC, sitting room, kitchen, two bedrooms and bathroom. There is a conservatory opening to the rear garden and there is off road parking to the front.

Amenities

Somerton was the ancient County town of Wessex in the 8th century and a former market town. There is a good level of amenities including shops, banks, library, doctor and dentist surgeries, there are also several public houses, restaurants, churches and primary schools within the town. A more comprehensive range of amenities can be found in the County town of Taunton to the west or Yeovil to the south. The mainline railway stations are located in Castle Cary, Yeovil and Taunton. The property is also well served by the A303 linking both central London and the South West, the M5 can be joined at junction 23.

Services

Mains water, electricity, drainage and gas are all connected, council tax band B.

Entrance Hall

Entrance door leads to the entrance hall with door to the sitting room.

WC

With window to the front, low level WC, wash hand basin and radiator.

Sitting Room 14' 10" x 12' 1" (4.53m x 3.68m)

With window to the front and radiator.

Kitchen/Diner 8' 7" x 12' 1" (2.61m x 3.68m)

With window and door to the rear. Range of base and wall mounted kitchen units with wall mounted boiler.

Conservatory 6' 10" x 9' 11" (2.08m x 3.02m)

uPVC double glazed conservatory with door to the garden.



Landing

Access to the loft space.

Bathroom 6' 2" x 5' 7" (1.89m x 1.70m)

With low level WC, wash hand basin and panelled bath with shower attachment. Radiator.

Bedroom 1 8' 7" x 12' 0" (2.61m x 3.67m)

With window to the rear and radiator.

Bedroom 2 9' 0" x 9' 11" (2.74m x 3.03m)

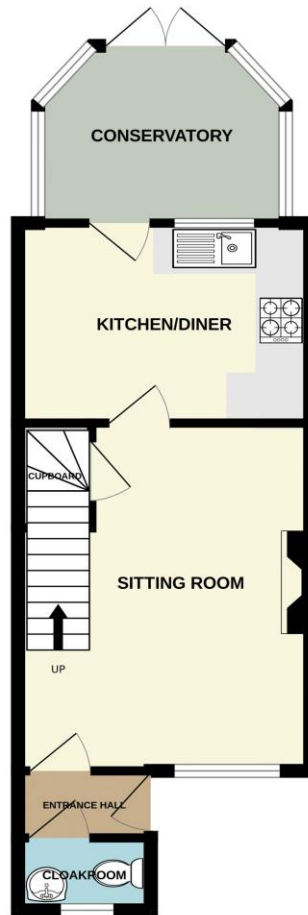
With window to the front, built in double wardrobe and radiator.

Outside

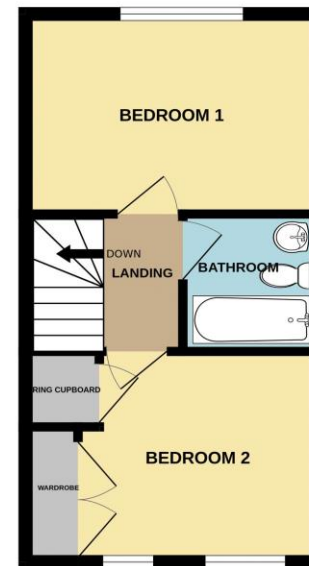
To the front of the house is an off road parking space, a gate and pedestrian path to the side of the neighbours property gives rear access to the garden. The rear garden is enclosed.



GROUND FLOOR
384 sq.ft. (35.6 sq.m.) approx.



1ST FLOOR
283 sq.ft. (26.3 sq.m.) approx.



TOTAL FLOOR AREA : 666 sq.ft. (61.9 sq.m.) approx.

Whilst every attempt has been made to ensure the accuracy of the floorplan contained here, measurements of doors, windows, rooms and any other items are approximate and no responsibility is taken for any error, omission or mis-statement. This plan is for illustrative purposes only and should be used as such by any prospective purchaser. The services, systems and appliances shown have not been tested and no guarantee as to their operability or efficiency can be given.
Made with Metropix ©2024

1 Brandon House, West Street, Somerton, TA11 7PS

Tel: 01458 274153

email: somerton@georgejames.properties

www.georgejames.properties



THE PROPERTY MISDESCRIPTIONS ACT 1991 The Agent has not tested any apparatus, equipment, fixtures and fittings or services and so cannot verify that they are in working order or fit for the purpose. A Buyer is advised to obtain verification from their Solicitor or Surveyor. References to the Tenure of a Property are based on information supplied by the Seller. The Agent has not had sight of the title documents. A Buyer is advised to obtain verification from their Solicitor. You are advised to check the availability of this property before travelling any distance to view. We have taken every precaution to ensure that these details are accurate and not misleading. If there is any point which is of particular importance to you, please contact us and we will provide any information you require. This is advisable, particularly if you intend to travel some distance to view the property. The mention of any appliances and services within these details does not imply that they are in full and efficient working order. These particulars are in draft form awaiting Vendors confirmation of their accuracy. These details must therefore be taken as a guide only and approved details should be requested from the agents.